

INNOVATIVE SOLUTIONS FOR YOUR ALL AUTOMATION NEED

WE DEAL IN

Linear Motion Products

X - Y Tables & Assembly Tables

Aluminum Extrusions
with Accessories

Hard Chrome &
Induction Hard Rods

Self Lubricating Bush



+91 9373 61 36 92



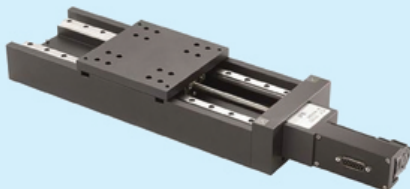
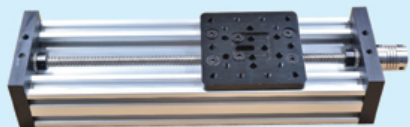
+91 9552 82 87 87



crystaltech13@gmail.com

LINEAR SLIDES

- Guide Rod & Ball Screw Linear Slide
- L. M. Guide with Ball Screw Travel 200 mm
- Mini Guide Rod Lead Screw Motorised Travel 50 mm
- Lead Screw with Guide Rod Travel 50 mm
- Timing Belt Slide Travel 3000 mm
- X - Y Linear Slides











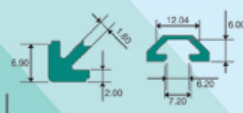
ALUMINUM EXTRUSION TABLES

- Roller Conveyor
- Assembly Work Stations
- Assembly Tables

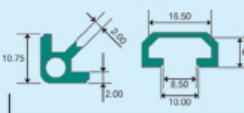


ALUMINUM FENCING PROFILES

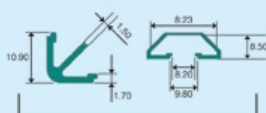
1	20 X 20	Technical Details	2	20 X 40	Technical Details
		Material : Aluminum			Material : Aluminum
		Mass (kg/m) : 0.500 kgs			Mass (kg/m) : 0.910 kgs
		Finish : Anodised			Finish : Anodised
		Groove Size :			Groove Size :
		Maximum Supply Length (m) : 5			Maximum Supply Length (m) : 5
		Center Hole : M5			Center Hole : M5
		Tap Size			Tap Size
3	30 X 30	Technical Details	4	30 X 60	Technical Details
		Material : Aluminum			Material : Aluminum
		Mass (kg/m) : 0.800 kgs			Mass (kg/m) : 1.470 kgs
		Finish : Anodised			Finish : Anodised
		Groove Size :			Groove Size :
		Maximum Supply Length (m) : 5			Maximum Supply Length (m) : 5
		Center Hole : M5			Center Hole : M5
		Tap Size			Tap Size
5	30 X 30	Technical Details	6	30 X 60	Technical Details
		Material : Aluminum			Material : Aluminum
		Mass (kg/m) : 0.620 kgs			Mass (kg/m) : 1.150 kgs
		Finish : Anodised			Finish : Anodised
		Groove Size :			Groove Size :
		Maximum Supply Length (m) : 5			Maximum Supply Length (m) : 5
		Center Hole : M5			Center Hole : M5
		Tap Size			Tap Size
7	30 X 30	Technical Details	8	30 X 30	Technical Details
		Material : Aluminum			Material : Aluminum
		Mass (kg/m) : 0.990 kgs			Mass (kg/m) : 0.740 kgs
		Finish : Anodised			Finish : Anodised
		Groove Size :			Groove Size :
		Maximum Supply Length (m) : 5			Maximum Supply Length (m) : 5
		Center Hole : M5			Center Hole : M5
		Tap Size			Tap Size



1 2



3 4



5 6

EXTRUSION ACCESSORIES

• Angle Bracket



20 X 20
30 X 30
40 X 40
80 X 80
40 X 80
60 X 40

• End Cap



• Hinges



• Handles



LEVELING PAD

Leveling pad are used to support structure, where structure height can be gradually increasing or decreasing. Leveling base has small swivelling angel to keep structure in vertical position even if floor area in uneven.



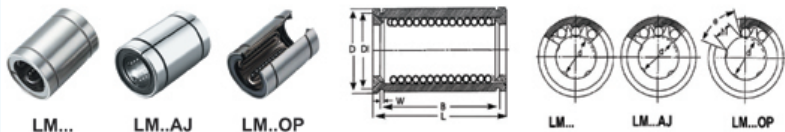
PRODUCT ORDER CODE	M	L	SUITABLE FOR PROFILE
LP M8*60*68	M8	68	1) AP 30*30
LP M8*60*100		100	
LP M10*60*68	M10	68	1) AP 40*40 (L) 2) AP 40*40 (M) 3) AP 40*40 (H)
LP M10*60*100		100	
LP M10*60*120		120	
LP M10*60*180		180	
LP M12*60*68	M12	68	1) AP 45*45 2) AP 45*60
LP M12*60*80		80	
LP M12*60*100		100	
LP M8*80*68	M8	68	1) AP 30*30
LP M8*80*100		100	
LP M10*80*68	M10	68	1) AP 40*40 (L) 2) AP 40*40 (M) 3) AP 40*40 (H)
LP M10*80*100		100	
LP M10*80*120		120	
LP M10*80*180		180	
LP M12*80*68	M12	68	1) AP 45*45 2) AP 45*60
LP M12*80*80		80	
LP M12*80*100		100	

INDUCTION HARDENED CHROME PLATED SHAFT



Size	Dia 6 to 80mm
Materials	C45, GCr15, SUS440C
Hardness	HRC62± 2 (SUS440C: HRC58)
Accuracy	g6
Roughness	Less than 1.5 μ M (Rmax)
Hard Band	0.8~0.3mm
Length	4000mm (6000mm on Request)
Straightness	100mm less than 0.5μ M
Roundness	Less than 3.0μ M (Rmax)

LINEAR BUSH BEARING



LM...

LM..AJ

LM..OP

LM...

LM..AJ

LM..OP



LMF...

LMK...

LMH...

LMF...

LMK...

LMH...

LMH 13 or less



LMF...L

LMK...L

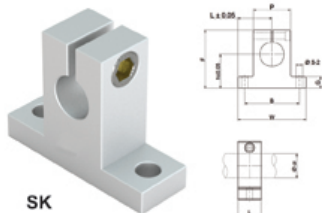
LMH...L

LMF...L

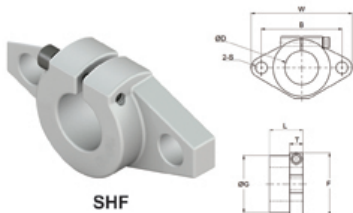
LMK...L

LMH...L

LMH 13 or less

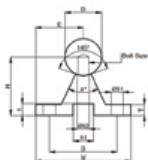
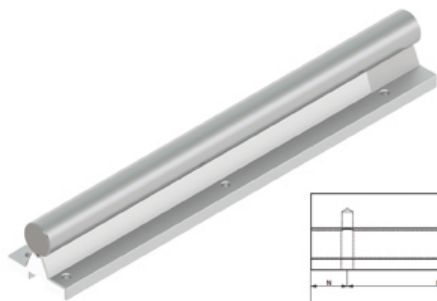


SK



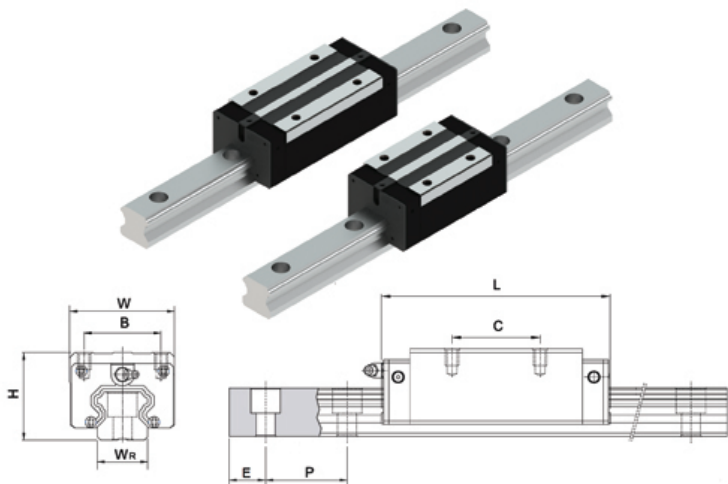
SHF

LINEAR SHAFT WITH SUPPORT



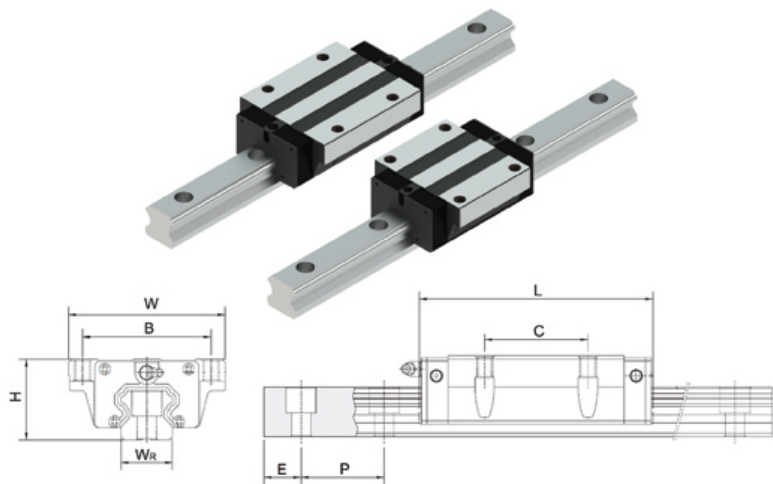
Model No.	Shaft Dia D	H(± 0.2)	E	W(± 0.2)	L	T(± 0.1)	A	B	N	P	S 2	S 1	h1(± 0.1)	t	Bolt Size
LMC 12 E	12	22	20	40	4000	5	50	29	12.5	75	4.5	4.5	8	4.5	M4X20
LMC 16 E	16	26	22.5	45	4000	5	50	33	50	150	5.5	5.5	9.5	6	M5X20
LMC 20 E	20	32	26	52	4000	6	50	37	50	150	6.6	6.6	11	6.5	M6X25
LMC 25 E	25	36	28.5	57	4000	6	50	42	100	200	9	6.6	14	8.5	M8X27
LMC 30 E	30	42	34.5	69	4000	7	50	51	100	200	11	9	17	10.5	M10X30
LMC 40 E	40	50	36.5	73	4000	8	50	55	50	300	11	9	17	10.5	M10X39
LMC 50 E	50	60	42	84	4000	9	46	63	50	300	13	11	19	12.5	M12X47
LMC 60 E	60	68	47	94	4000	10	46	72	50	300	15	11	22	13	M14X50
LMC 80 E	80	86	58	116	4000	12	46	92	50	300	17	12	25	15	M16X60

LM GUIDE WAY - HGH - CA / HA SERIES



Model No.	H	W	L	B	C	W _R	P	(Recommended) E
HGH15CA	28	34	61.4	26	26	15	60	20
HGH20CA	30	44	77.5	32	36	20	60	20
HGH20HA	30	44	92.2	32	50	20	60	20
HGH25CA	40	48	84	35	35	23	60	20
HGH25HA	40	48	104.8	35	50	23	60	20
HGH30CA	45	60	97.4	40	40	28	80	20
HGH30HA	45	60	120	40	60	28	80	20
HGH35CA	55	70	112	50	50	34	80	20
HGH35HA	55	70	138	50	72	34	80	20
HGH45CA	70	86	139	60	60	45	105	22.5
HGH45HA	70	86	171	60	80	45	105	22.5
HGH55CA	80	100	167	75	75	53	120	30
HGH55HA	80	100	205	75	95	53	120	30
HGH65CA	90	126	200	76	70	63	150	35
HGH65HA	90	126	260	76	120	63	150	35

LM GUIDE WAY - HGW - CC / HC SERIES



Model No.	H	W	L	B	C	W _R	P	(Recommended) E
HGW15CC	24	47	61.4	38	30	15	60	20
HGW20CC	30	63	77.5	53	40	20	60	20
HGW20HC	30	63	92.2	53	40	20	60	20
HGW25CC	36	70	84	57	45	23	60	20
HGW25HC	36	70	104.8	57	45	23	60	20
HGW30CC	42	90	97.4	72	52	28	80	20
HGW30HC	42	90	120	72	52	28	80	20
HGW35CC	48	100	112	82	62	34	80	20
HGW35HC	48	100	138	82	62	34	80	20
HGW45CC	60	120	139	100	80	45	105	22.5
HGW45HC	60	120	171	100	80	45	105	22.5
HGW55CC	70	140	167	116	95	53	120	30
HGW55HC	70	140	205	116	95	53	120	30
HGW65CC	90	170	200	142	110	63	150	35
HGW65HC	90	170	260	142	110	63	150	35

OUR OTHER PRODUCTS

COUPLING



CLAMPING ELEMENTS



PRECISION LOCK NUT



BALL TRANSFER UNIT



CAM FOLLOWERS



CROSS ROLLER GUIDE





+91 9373 61 36 92 | 9552 82 87 87



crystaltech13@gmail.com



Crystal Technology, Survey No.50/8A,
Opp. Kotak Mahindra Bank, Narhe-Dhayari Road,
Narhe, Pune-411041



www.crystaltechnology.com